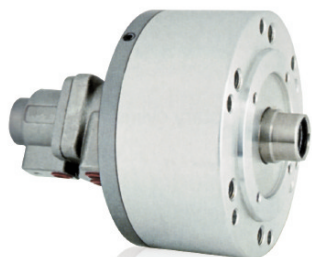


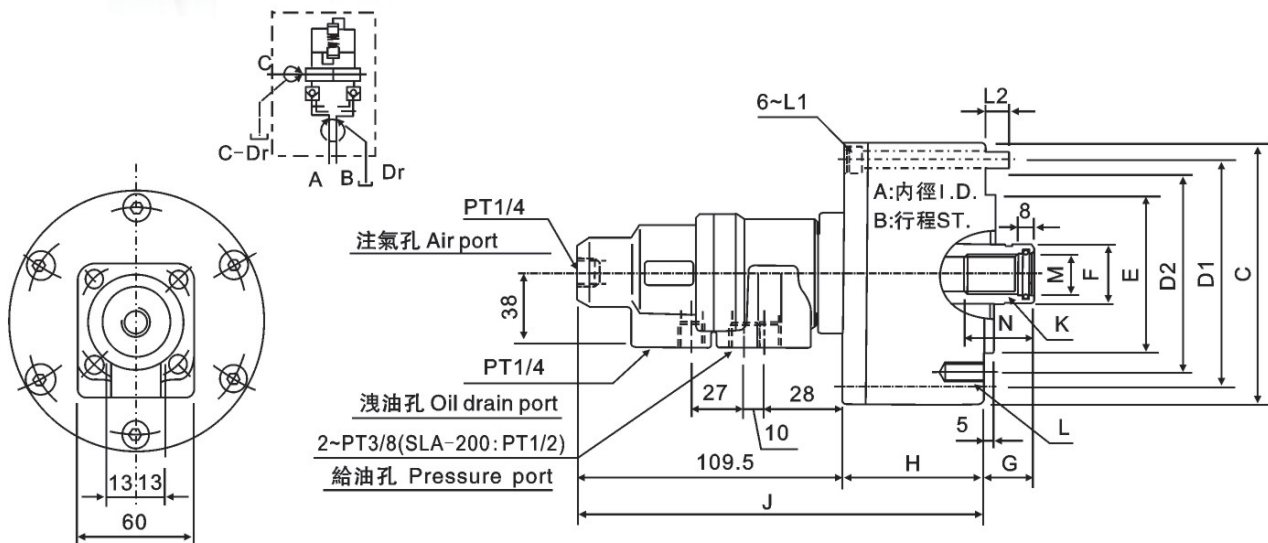
### > SLA SERIES

#### 注氣型回轉油壓缸

#### ROTATING HYDRAULIC CYLINDER WITH AIR CONNECTION



- ◎ 高速，注氣型回轉油壓缸，可經由後端回轉繼手供給空氣。
- ◎ 安裝時可由後端鎖固之。
- ◎ 內建逆止閥自鎖機構及壓力洩壓閥
- ◎ 使用時，請混入微量的油霧。
- ◎ To allow compressed air to be feed from the rear end of the distributor through the rotating union.
- ◎ Can screw it from the rear end of the cylinder when mounting.
- ◎ When used, a little oil mist should be contained.
- ◎ Built-in safety check valves and pressure relief valves.



規格 Spec 型號 Model	活塞面積 Eff. piston area cm <sup>2</sup>		行程 (mm) Piston stroke	最高回轉速 max r.p.m	最高使用壓力 Mpa Max. pressure (kgf/cm <sup>2</sup> )	注氣部最高使用壓力 Mpa Air connection Max. pressure (kgf/cm <sup>2</sup> )	慣性矩 kg·m <sup>2</sup>	重量 Weight (kg)
	伸側 Extend	縮側 Retract						
SLA-75	42.6	37.1	15	6000	4.0(40)	0.8(8)	0.01	3.0
SLA-100	77.0	71.5	20					
SLA-125	121.2	113.1	25	5500			0.06	7.0
SLA-150	175.2	160.8	30					
SLA-200	312.5	290.4	35					

規格 Spec 型號 Model	A	B	C	D1	D2	E h7	F	G		H	J	K	L	L1	L2	M H8	N
								max	min								
SLA-75	75	15	107	90	65	30	45	30	57	166	M20x2.5	6~M8x16	M8x60				
SLA-100	100	20	132	115	100	80	30	45	72	181	M20x2.5	6~M10x20	M8x75	12	21	35	
SLA-125	125	25	160	140	130	110	35	50	82	191	M24x3.0	6~M12x20	M8x85		25	45	
SLA-150	150	30	190	170			45	55	95	204	M30x3.5	12~M12x24	M10x100	16	31		
SLA-200	200	35	245	220	145	120	55	70	115	225	M36x4.0	12~M16x30	M10x125	21	37	60	

\* 保留技術更改的權利，恕不另行通知 Subject to technology changes without prior information  
 \* 非標需求可訂做 Non-standard requirements can be made

