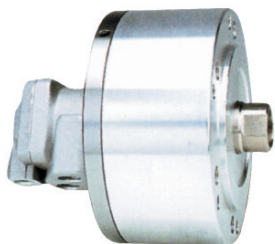


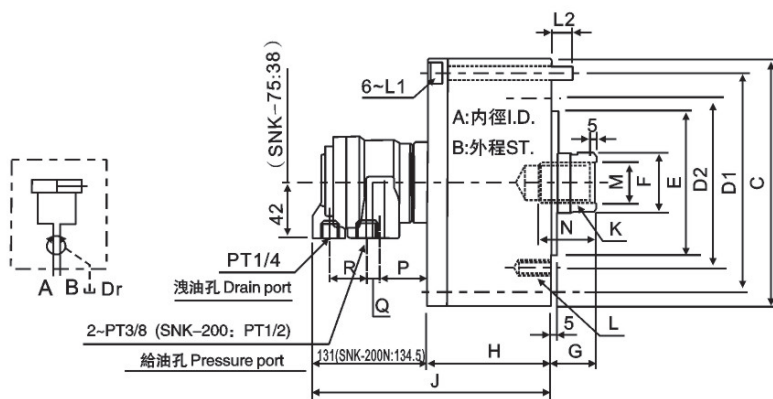
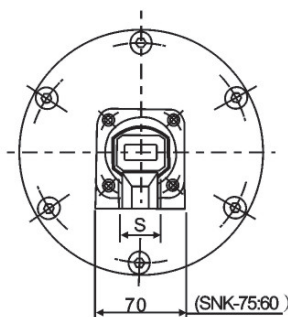
### > SNK SERIES

#### 短型中實回轉油壓缸

#### ROTARY HYDRAULIC CYLINDER



- ◎ 短型, 高速, 輕量型回轉油壓缸。
- ◎ 安裝時可由後端鎖固之。
- ◎ For short form ,light weight and high speed rotary cylinder.
- ◎ Can screw it from the rear end of the cylinder when mounting.
- ◎ 洩油孔配管務必單獨接回油壓槽，以避免產生背壓。
- ◎ The drain port should be independently connected to oil tank to avoid back pressure.



規格 Spec 型號 Model	活塞面積 Eff.piston area cm <sup>2</sup>		行程 (mm) Piston stroke	最高回轉速 max r.p.m	最大使用壓力 Max. Operating Pressure MPa(kgf/cm <sup>2</sup> )	慣性矩 kg·m <sup>2</sup>	重量(kg) Weight
	押側 Extend	拉側 Retract					
SNK-75	44.2	37.1	15	6000	4.0(40)	0.01	2.8
SNK-100	78.5	71.5	20			0.03	4.3
SNK-125	122.7	113.1	25	5500	4.0(40)	0.05	6.8
SNK-150	176.7	160.8	30			0.09	9.4
SNK-200	314.1	290.4	35	2000	5.0(50)	0.28	15.3
SNK-250	469.1	436.0	60			0.40	45.2

規格 Spec 型號 Model	A	B	C	D1	D2	E h7	F	G		H	J	K	L	L1	L2	M	N	P	Q	R	S
								max	min												
SNK-75	75	15	107	90	65		30	45	30	57	148	M20x2.5	6~M8x16	M8x60		21	35		28		26
SNK-100	100	20	132	115	100	80				72	163		6~M10x20	M8x75	12						
SNK-125	125	25	160	140	130	110	35	50	25	82	172	M24x3.0	6~M12x20	M8x85		25		26	10		
SNK-150	150	30	190	170			45	55		95	184	M30x3.5	12~M12x24	M10x100	16	31	45			27.5	32
SNK-200	200	35	245	220	145	120	55	70	35	115	201	M36x4.0	12~M16x30	M10x125	21	37	60	30	6		
SNK-250	245	60	307	275	220	160	65	85	25	165	255	M42x3.0	12~M20x35	M16x175	28	45	65	37	18		28

\* 保留技術更改的權利，恕不另行通知 Subject to technology changes without prior information  
 \* 非標需求可訂做 Non-standard requirements can be made

