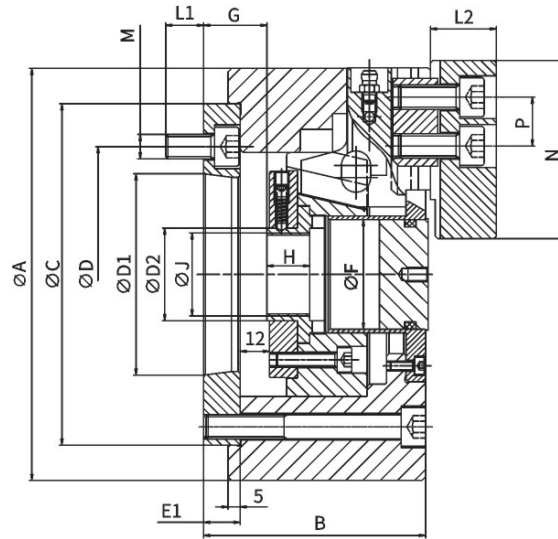
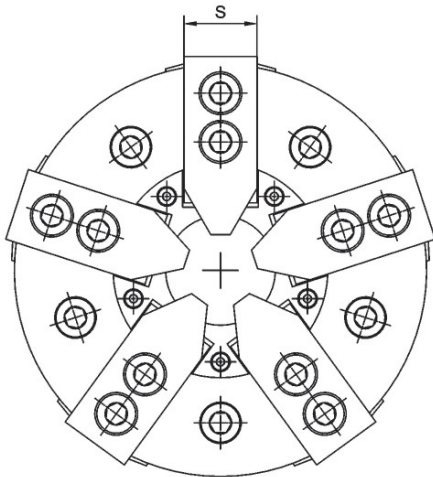
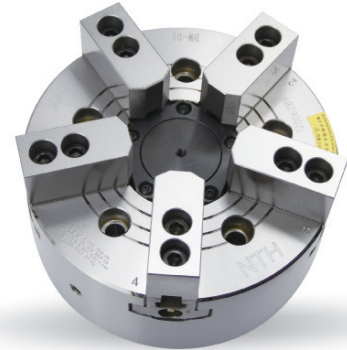


> BW SERIES

五爪中空動力卡盤

5 JAW THROUGH HOLE POWER CHUCK

- ◎ 多點夾持，針對薄壁管形，環形工件，可改善工件夾持過程中的變形問題。
- ◎ 另有五爪中實卡盤可選。
- ◎ More contact point clamping, it can improve the deformation issue during clamping process for thin wall pipe or ring like workpiece.
- ◎ 5 jaw closed center power chuck is optional.



規格 Spec 型號 Model	楔心行程 Plunger stroke (mm)	爪行程直徑 Jaw stroke (Dia) (mm)	直徑夾持範圍 Clamping Range Dia. (mm)	容許油壓缸推力 Max. D.B. pull KN (Kgf)	最大夾持力 Max. clamping force KN (Kgf)	最高轉速 Max RPM	重量 Weight (Kg)	適合油缸 Matching Cylinder	最大使用壓力 Max. pressure Mpa (Kgf/cm ²)
BW-06A5	12	5.5	15-168	17.1(2200)	35.8(5500)	5000	15.5	H-1246/HK-1246	2.74(20)
BW-08A6	16.5	7.6	13-210	34.3(3500)	85.8(8750)	5000	25.5	H-1552/HK-1552	2.8(28)
BW-10A8	21	8.9	46-254	34.3(3000)	85.8(7000)	2500	43.5	H-1875/HK-1875	2.1(21)

規格 Spec 型號 Model	A	B	C(H6)	D	D1	E1	G max	G min	H
BW-06A5	169	91	140	104.8	82.563	15	26	14	17.5
BW-08A6	210	110	170	133.4	106.375	24	39	22.5	19.5
BW-10A8	254	113	220	171.4	139.719	18	28.5	7.5	25

規格 Spec 型號 Model	F	L1	L2	J	D2	M	N	P	S
BW-206A5	45	15.5	30	M34*1.5	38	10	73	20	31
BW-208A6	52	19	36	M60*2.0	66	12	73	20	31
BW-210A8	81	24	38	M85*2.0	97	16	95	25	35

* 保留技術更改的權利，恕不另行通知 Subject to technology changes without prior information
 * 非標需求可訂做 Non-standard requirements can be made

