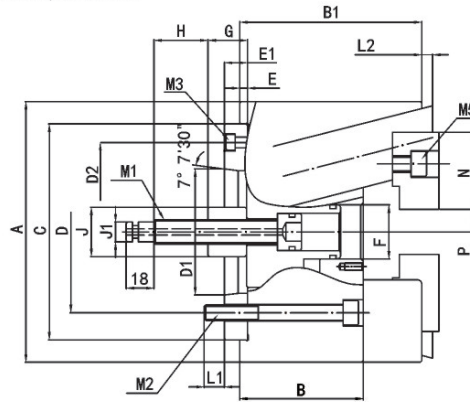
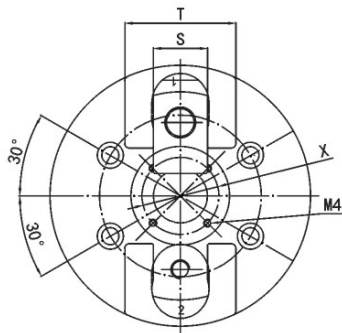
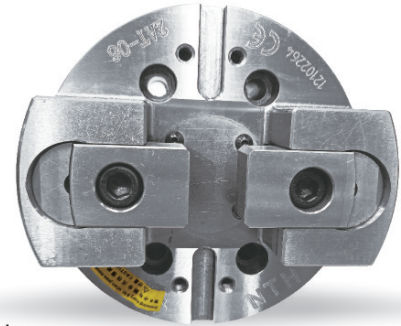


### > 2AT SERIES

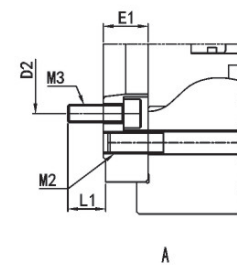
#### 二爪強力後拉固鎖式動力夾頭

#### 2 JAW PULL LOCK POWER CHUCK

- ◎ 可同時將工件作徑向夾持與軸向後拉，使工件緊貼定位基準面不上浮。
- ◎ 可配合氣密檢測，進行軸向位置確認，適合對長度的進行高精度加工。
- ◎ 此夾頭為圓柱滑動結構及高剛性硬化處理的本體，並經過軸孔精磨，確保高夾持精度與耐用度，適合使用于重切削的場合。
- ◎ To do radial clamp and axial pull down simultaneously, it can keep the workpiece attaching close to the base surface of the chuck. During clamping process, there is almost no workpiece uplifting movement.
- ◎ It can go with Air-tight pressure and detect to inspect the axial position, it's suitable for high precision length machining work.
- ◎ This chuck is Pin arbor pull-down mechanism, the chuck body is heat-treated and fine bored, the clamping precision and durability is very good, it's suitable for heavy duty machining process.



2AT-08A5  
2AT-10A6  
參考圖A  
Refer to Fig.A



規格 Spec 型號 Model	模心行程 Plunger stroke (mm)	爪行程直徑 Jaw stroke (Dia) (mm)	直徑夾持範圍 Clamping Range Dia. (mm)	容許油壓缸推力 Max. D.B. pull KN (Kgf)	最大夾持力 Max. clamping force KN (Kgf)	最高轉速 Max RPM	慣性矩 I Kg · m <sup>2</sup>	重量 Weight (Kg)	適合油缸 Matching Cylinder	最大使用壓力 Max. pressure Mpa (Kgf/cm <sup>2</sup> )
2AT-05A4	10	5.2	16-48	8.1(830)	25.0(2550)	6000	0.02	7.1	SLA-75/S-80	2.3(23)
2AT-06A5	15	7.8	22-60	16.7(1700)	52.4(5350)	6000	0.05	13.8	SLA-100/S-100	2.4(24)
2AT-08A5	20	10.3	32-90	23.7(2420)	74.5(7600)	5000	0.14	25.9	SLA-100/S-100	3.4(34)
2AT-08A6	20	10.3	32-90	23.7(2420)	74.5(7600)	5000	0.14	24	SLA-100/S-100	3.4(34)
2AT-10A6	20	10.3	45-120	34.3(3500)	107.8(11100)	4000	0.36	50	SLA-125/S-125	3.2(32)
2AT-10A8	20	10.3	45-120	34.3(3500)	107.8(11100)	4000	0.36	48.5	SLA-125/S-125	3.2(32)

規格 Spec 型號 Model	A	B	B1	C(H6)	D	D1	D2	E	E1	F	G max	G min	H
2AT-05A4	135	70	100	110	82.6	63.51	96	4	15	30	29	19	32
2AT-06A5	168	88	128	140	104.8	82.56	116	5	15	35	39	24	32
2AT-08A5	210	100	145	170	133.4	82.56	104.8	5	23	45	44	24	38
2AT-08A6	210	100	145	170	133.4	106.38	150	5	17	45	44	24	38
2AT-10A6	254	110	160	220	171.4	106.38	133.4	5	25	55	44	24	38
2AT-10A8	254	110	160	220	171.4	139.72	190	5	18	55	44	24	38

規格 Spec 型號 Model	J1	L1	L2 min	M1	M2	M3(Ad.)	M4	M5	N	P min	S	T	X
2AT-05A4	11	13	±5	M14	4-M10	4-M6	4-M5	2-M10	45	8	28	60	40
2AT-06A5	13	16	±7.5	M16	4-M10	4-M6	4-M5	2-M12	50	10	35	72	50
2AT-08A5	17	18	±10	M20	4-M12	4-M10	4-M6	2-M12	63	12.5	40	85	60
2AT-08A6	17	18	±10	M20	4-M12	4-M6	4-M6	2-M12	63	12.5	40	85	60
2AT-10A6	17	20	±10	M20	4-M16	4-M12	4-M6	2-M14	74	15	50	100	70
2AT-10A8	17	20	±10	M20	4-M16	4-M8	4-M6	2-M14	74	15	50	100	70

\* 保留技術更改的權利，恕不另行通知 Subject to technology changes without prior information  
\* 非標需求可訂做 Non-standard requirements can be made

