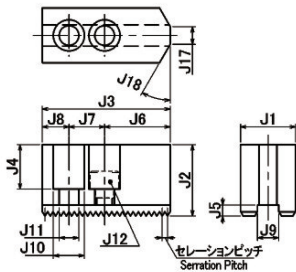


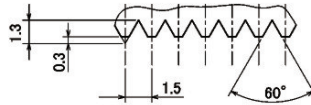
## 日系卡盤軟爪系列2 (S型)

## SOFT JAW FOR JIS STANDARD

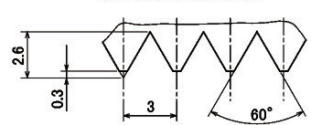
標準生爪  
Standard Soft Blank Jaw



セレーションピッチ 1.5mm  
Serration Pitch 1.5mm



セレーションピッチ 3mm  
Serration Pitch 3mm



- ◎ Standard soft blank jaws are made of carbon steel, JIS S48C (SAE 1045 OR ISO C50 is equivalent to JIS S48C)
- ◎ When ordering jaws, specify chuck model number
- ◎ When ordering jaw nuts if needed.
- ◎ Specify the following information if special jaws are necessary
  - Shape of work piece
  - Machining condition
  - Size of work piece
  - Gripping position

| Chuck series number | Serration Pitch | J1  | J2  | J3 | J4   | J5   | J6 | J7   | J8   | J9   | J10 | J11  | J12  | J16  | J17 | J18 | 質量kg (1個)<br>Weight |     |     |
|---------------------|-----------------|-----|-----|----|------|------|----|------|------|------|-----|------|------|------|-----|-----|---------------------|-----|-----|
| H01MA               | 4               | 1.5 | 25  | 25 | 54   | 14   | 5  | 30   | 14   | 10   | 10  | 13.5 | 9    | M8   | -   | 8   | 30°                 | 0.2 |     |
|                     | 5               | 1.5 | 25  | 25 | 58.5 | 14   | 5  | 31.5 | 19   | 8    | 10  | 14   | 9    | M8   | -   | -   | -                   | 0.2 |     |
|                     | 6               | 3.0 | 31  | 40 | 72   | 25   | 6  | 37   | 20   | 15   | 12  | 17.5 | 11   | M10  | -   | -   | -                   | 0.6 |     |
|                     | 6S              | 1.5 | 31  | 40 | 70.5 | 26   | 5  | 35.5 | 20   | 15   | 12  | 17.5 | 11   | M10  | -   | -   | -                   | 0.6 |     |
|                     | 8               | 3.0 | 34  | 40 | 90   | 22   | 6  | 45   | 25   | 20   | 14  | 20   | 13.5 | M12  | -   | -   | -                   | 0.8 |     |
|                     | 8S              | 1.5 | 34  | 40 | 90   | 23   | 5  | 45   | 25   | 20   | 14  | 20   | 13.5 | M12  | -   | -   | -                   | 0.8 |     |
|                     | 10              | 3.0 | 40  | 40 | 111  | 22   | 6  | 51   | 30   | 30   | 16  | 20   | 13.5 | M12  | -   | -   | -                   | 1.2 |     |
|                     | 10S             | 1.5 | 40  | 40 | 111  | 23   | 5  | 51   | 30   | 30   | 16  | 20   | 13.5 | M12  | -   | -   | -                   | 1.2 |     |
|                     | 12              | 3.0 | 50  | 50 | 129  | 32   | 6  | 60   | 30   | 39   | 18  | 23   | 15.5 | M14  | -   | -   | -                   | 2.2 |     |
|                     | 12S             | 1.5 | 50  | 50 | 129  | 33   | 5  | 60   | 30   | 39   | 18  | 23   | 15.5 | M14  | -   | -   | -                   | 2.2 |     |
| H01MA6              | 15              | 3.0 | 65  | 70 | 156  | 50   | 8  | 72   | 50   | 34   | 26  | 32   | 22   | M20  | -   | -   | -                   | 4.7 |     |
|                     | A5-J            | 1.5 | 31  | 40 | 70.5 | 26   | 5  | 35.5 | 20   | 15   | 12  | 17.5 | 11   | M10  | -   | -   | -                   | 0.6 |     |
| H022M               | 6               | 1.5 | 30  | 30 | 70.5 | 20   | 5  | 36   | 20   | 14.5 | 12  | 17.5 | 11   | M10  | -   | -   | -                   | 0.4 |     |
|                     | 8               | 1.5 | 35  | 40 | 90   | 26   | 5  | 45   | 25   | 20   | 16  | 20   | 13.5 | M12  | -   | -   | -                   | 0.7 |     |
|                     | 10              | 1.5 | 40  | 50 | 105  | 35   | 5  | 51   | 30   | 24   | 18  | 23   | 15.5 | M14  | -   | -   | -                   | 1.3 |     |
| H027M               | 12              | 3   | 50  | 60 | 126  | 42   | 6  | 60   | 40   | 26   | 21  | 26   | 17.5 | M16  | -   | -   | -                   | 2.4 |     |
|                     | 4               | 1.5 | 25  | 25 | 47.5 | 16   | 4  | 22   | 16   | 9.5  | 11  | 14   | 9    | M8   | -   | 4   | 30°                 | 0.2 |     |
|                     | 5               | 1.5 | 25  | 25 | 47.5 | 16   | 4  | 22   | 16   | 9.5  | 11  | 14   | 9    | M8   | -   | 4   | 30°                 | 0.2 |     |
|                     | 6               | 1.5 | 35  | 35 | 66   | 22   | 5  | 31.5 | 20   | 14.5 | 12  | 17.5 | 11   | M10  | -   | -   | -                   | 0.6 |     |
|                     | H037M           | 8   | 1.5 | 40 | 40   | 85.5 | 26 | 5    | 40.5 | 25   | 20  | 16   | 20   | 13.5 | M12 | -   | -                   | -   | 1.0 |
|                     |                 | 10  | 1.5 | 45 | 45   | 108  | 30 | 5    | 54   | 30   | 24  | 18   | 23   | 15.5 | M14 | -   | -                   | -   | 1.5 |
| H032M               | 12              | 1.5 | 50  | 60 | 111  | 42   | 5  | 51   | 35   | 25   | 21  | 26   | 17.5 | M16  | -   | -   | -                   | 2.2 |     |
|                     | 15              | 3   | 60  | 66 | 138  | 47   | 8  | 66   | 42   | 30   | 26  | 32   | 22   | M20  | -   | -   | -                   | 3.9 |     |
|                     | 6               | 1.5 | 28  | 30 | 60   | 21   | 4  | 30   | 16   | 14   | 11  | 14   | 9    | M8   | -   | -   | -                   | 0.4 |     |
|                     | 6               | 1.5 | 26  | 28 | 66   | 16   | 5  | 34   | 20   | 12   | 12  | 17.5 | 11   | M10  | 54  | 5   | 30°                 | 0.3 |     |
| H3KT                | 8               | 1.5 | 35  | 38 | 95   | 23   | 5  | 46   | 25   | 24   | 14  | 20   | 13.5 | M12  | 75  | 12  | 30°                 | 0.8 |     |
|                     | 10              | 1.5 | 40  | 42 | 110  | 27   | 5  | 50   | 30   | 30   | 16  | 20   | 13.5 | M12  | 90  | 15  | 15°                 | 1.2 |     |
|                     | 12              | 1.5 | 50  | 50 | 111  | 33   | 5  | 60   | 30   | 21   | 21  | 26   | 17.5 | M16  | -   | -   | -                   | 1.8 |     |

### 日系卡盤生爪共用表 COMPATIBILITY OF SOFT BLANK JAW

| Chuck series number | Compatible chuck series number        |
|---------------------|---------------------------------------|
| H01MA               | 4 H022M5 H024M5 H012D4                |
|                     | 6 H010D6                              |
|                     | 8 H010D8                              |
| H022M               | 15 H01MA18 H01MA21 H01MA24            |
|                     | 6 H023M8 H024M6 H024D6 H05M6          |
|                     | 8 H023M10 H024M8 H024D8 H05M8         |
|                     | 10 H023M12 H024M10 H05M10             |
| H037M               | 12 H023M15 H024M12                    |
|                     | 6 H032M8 H027M6 H012D6 H024D6 H034M6  |
|                     | 8 H032M10 H027M8 H012D8 H024D8 H034M8 |
|                     | 10 H032M12 H027M10 H012D10 H034M10    |
| H027M               | 12 H027M12 H034M12                    |
|                     | 15 H037M15 H034M15                    |