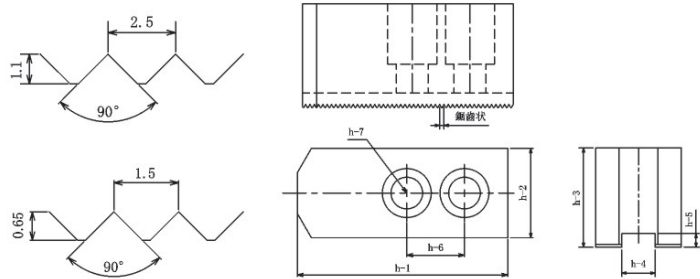
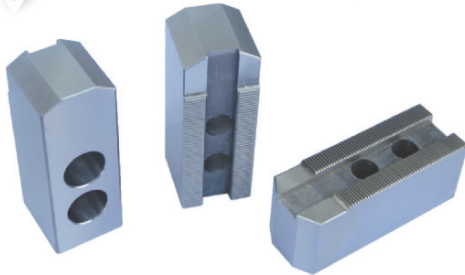


### K52卡盤軟爪



規格/尺寸 MODELS/DIMENSION	長 Length h-1	寬 Width h-2	高 Height h-3	鍵槽寬 Slot width h-4	鍵槽深 Slot depth h-5	中心孔距 Hole center distance h-6	螺絲 Screw h-7	齒距裝飾距 Serration pitch
CH-125	56	25	32	11	3.5	16	M8	1.5 × 90°
CH-160	70	35	42	13	4	20	M10	1.5 × 90°
CH-200	82	40	46	16	4	24	M12	1.5 × 90°
CH-250	95	45	50	17	4	28	M12	1.5 × 90°
CH-315	118	50	62	21	4	32	M16	2.5 × 90°
CH-400	148	55	72	22	5	45	M16	2.5 × 90°

### 三爪自定心卡盤卡爪

### HARD JAWS FOR SCROLL CHUCK

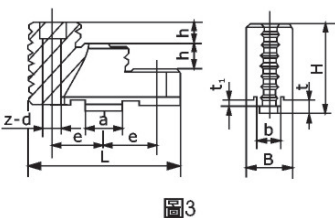
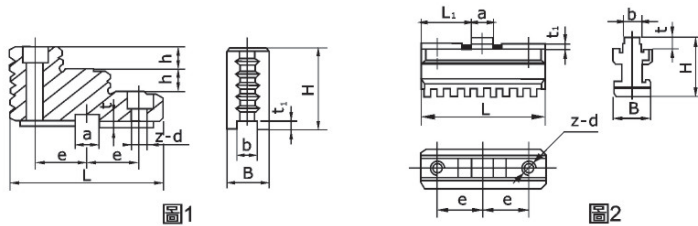
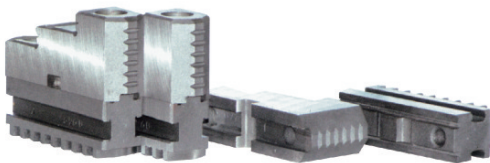


圖3

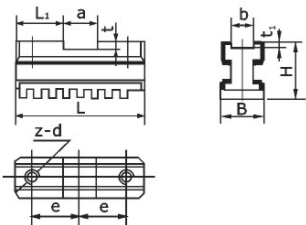


圖4

#### C型分離爪Two-Piece Jaws for Form C

規格 Size	L	B	H	h	a	b	e	t	t <sub>1</sub>	z-d	參考圖
200	88	22	44	12	13	11	28	7	3	2-9	圖1
240	108	27	46	12	13	13	35	7	3	2-11	圖1
250	108	27	46	12	13	13	35	7	3	2-11	圖1
規格 Size	L	L1	B	H	a	b	e	t	t <sub>1</sub>	Z-d	參考圖
200	76	31.5	22	36	13	11	28	6	2	2-M8	圖2
240	95	41	27	39	13	13	35	6	2	2-M10	圖2
250	95	41	27	39	13	13	35	6	2	2-M10	圖2
規格 Size	L	B	H	h	a	b	e	t	t <sub>1</sub>	z-d	參考圖
320	127	36	59.5	17	28	15	44	7.5	2.8	2-13	圖3
325	127	36	59.5	17	28	15	44	7.5	2.8	2-13	圖3
380	127	36	59.5	17	28	15	44	7.5	2.8	2-13	圖3
規格 Size	L	L1	B	H	a	b	e	t	t <sub>1</sub>	z-d	參考圖
320	114	43	36	40	28	15	44	8.5	3.5	2-M12	圖4
325	114	43	36	40	28	15	44	8.5	3.5	2-M12	圖4
380	114	43	36	40	28	15	44	8.5	3.5	2-M12	圖4

※包括頂爪和基爪

The jaws are composed of top jaws and master jaws.

