

油氣壓固定式夾頭-前推型

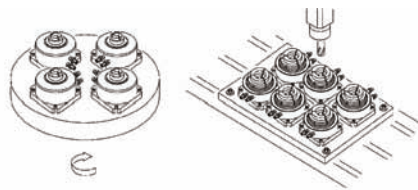
JAS/JHS AIR/HYDRAULIC POWER STATIONARY CHUCK-PUSH FORWARD TYPE

產品簡介

油氣壓固定式夾頭具備精簡的體積，讓您的工作平台能同時容納更多固定式夾頭，以提升工作效率。產品的高品質符合您對穩定性、高精度、防水防塵的要求，降低維修及人工成本，適合安裝於各式鑽銑工作機台。

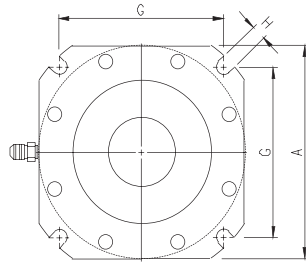
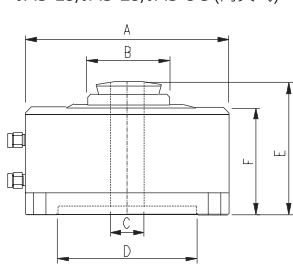
- ◎ 鋼製夾頭本體
- ◎ 高精度·高剛性·產品壽命長
- ◎ 防塵·防屑·防切削液
- ◎ 夾頭強制放料設計·不卡料
- ◎ 體積小·重量輕·工作速度快

Cost effective stationary collet chuck.
Dead length design: no axial movement.
High accuracy. High rigidity. Long product life.
High resistant to cutting chips, fluid or dust.
Chuck force-opening design ensures no workpieces jamming.

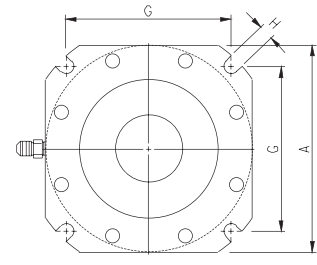
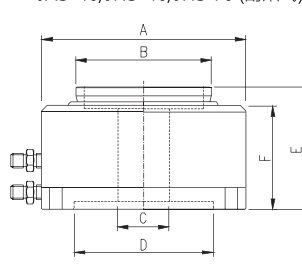


JAS/JHS產品尺寸及性能規格

JAS-15/JAS-25/JAS-5C (筒夾式)



JAS-40/JHS-40/JHS-70 (副爪式)



型號 / Model	JAS-15	JAS-25	JAS-5C	JAS-40	JHS-40	JHS-70
A	118 (4.65")	144 (5.67")	144 (5.67")	168 (6.61")	144 (5.67")	190 (7.48")
B	40 (1.57")	55 (2.17")	55 (2.17")	95 (3.74")	95 (3.74")	136 (5.35")
C	14 (0.55")	26 (1.02")	26 (1.02")	38 (1.50")	38 (1.50")	68 (2.68")
D	90 (3.54")	100 (3.94")	100 (3.94")	100 (3.94")	100 (3.94")	155 (6.10")
E	77 (3.03")	108 (4.25")	93 (3.66")	97 (3.82")	94 (3.70")	95 (3.73")
F	64 (2.52")	74 (2.91")	74 (2.91")	77 (3.03")	73 (2.87")	74 (2.91")
G	97 (3.82")	118 (4.65")	118 (4.65")	136.5 (5.37")	118 (4.65")	153.5 (6.04")
H	9 (0.35")	9 (0.35")	9 (0.35")	11 (0.43")	9 (0.35")	11 (0.43")
工作筒夾/副爪 Collet/Jaw Model	YB-15型筒夾 YB-15 Type Collet	YB-25型筒夾 YB-25 Type Collet	5C型筒夾 5C Type Collet	C-40型副爪 C-40 Type Jaw	C-40型副爪 C-40 Type Jaw	C-70型副爪 C-70 Type Jaw
氣壓/油壓驅動 Power source	氣壓/油壓 Air/Hydraulic	氣壓/油壓 Air/Hydraulic	氣壓/油壓 Air/Hydraulic	氣壓 Air	油壓 Hydraulic	油壓 Hydraulic
工作壓力 Working pressure	3-15kg/cm ² (43-214psi)	3-15kg/cm ² (43-214psi)	3-15kg/cm ² (43-214psi)	3-8kg/cm ² (43-114psi)	3-20kg/cm ² (43-286psi)	3-20kg/cm ² (43-286psi)
最大夾持徑(通孔) Max clamping dia. (Through hole)	14mm (0.56")	26mm (1.02")	26mm (1.02")	38mm (1.50")	38mm (1.50")	68mm (2.68")
最大夾持徑(不通孔) Max clamping dia. (Non thru)	18mm (0.71")	28mm (1.10")	28mm (1.10")	50mm (1.97")	50mm (1.97")	90mm (3.54")
活塞面積 Piston Area	79cm ² (12.2in ²)	112cm ² (17.4in ²)	112cm ² (17.4in ²)	240cm ² (37.2in ²)	86cm ² (13.3in ²)	110cm ² (17.1in ²)
夾持力 Clamping force	2850kgf@7kg/cm ² (6260lbf@100psi)	3890kgf@7kg/cm ² (8550lbf@100psi)	3890kgf@7kg/cm ² (8550lbf@100psi)	5090kgf@7kg/cm ² (11210lbf@100psi)	5250kgf@20kg/cm ² (11550lbf@286psi)	6780kgf@20kg/cm ² (14920lbf@286psi)
產品淨重 N, W	5.0kgs (11.0lbs)	9.0kgs (19.8lbs)	9.0kgs (19.8lbs)	12.5kgs (27.5lbs)	8.5kgs (18.7lbs)	13.5kgs (29.7lbs)

